

BERNAT® KNIT ZIGZAG BLANKET | KNIT



 KNIT | SKILL LEVEL: **EASY**

ABBREVIATIONS

Approx = Approximately

Beg = Begin(ning)

K = Knit

K2tog = Knit next 2 stitches together

Pat = Pattern

Pss = Pass slipped stitch over

Rep = Repeat

RS = Right side

Sl1 = Slip next stitch knitwise

St(s) = Stitch(es)

WS = Wrong side

Yo = Yarn over

MEASUREMENTS

Approx 45" x 55" [114.5 x 139.5 cm].

GAUGE

12 sts and 17 rows = 4" [10 cm] in stocking st.

INSTRUCTIONS

With MC, cast on 179 sts (multiple of 14 sts + 11). **Do not** join. Working back and forth across needle, knit 5 rows (garter st), noting 1st row is WS. Break MC.

Proceed in pat as follows: See chart on page 2.

****1st row:** (RS). With A, K5. *K1. yo. K5. Sl1. K2tog. pss. K5. yo. Rep from * to last 6 sts. K6.

2nd, 4th, 6th, 8th and 10th rows: K5. Purl to last 5 sts. K5.

3rd row: K5. *K2. yo. K4. Sl1. K2tog. pss. K4. yo. K1. Rep from * to last 6 sts. K6.

5th row: K5. *K3. yo. K3. Sl1. K2tog. pss. K3. yo. K2. Rep from * to last 6 sts. K6.

7th row: K5. *K4. yo. K2. Sl1. K2tog. pss. K2. yo. K3. Rep from * to last 6 sts. K6.

9th row: K5. *K5. yo. K1. Sl1. K2tog. pss. K1. yo. K4. Rep from * to last 6 sts. K6.

11th row: K5. *K6. yo. Sl1. K2tog. pss. yo. K5. Rep from * to last 6 sts. K6.

12th row: As 2nd row. Break A.

13th to 18th rows: With MC, knit 6 rows (garter st). Break MC at end of last row.**

These 18 rows form pat and 5 garter sts at each side edge.

MATERIALS

Bernat® Velvet™ (10.5 oz/300 g; 315 yds/288 m)

Main Color (MC) Mushroom (32003) **2 balls**

Contrast A White Sand (32029) **2 balls**

Contrast B Rich Blue (32019) **1 ball**

Contrast C Blackbird (32002) **1 ball**

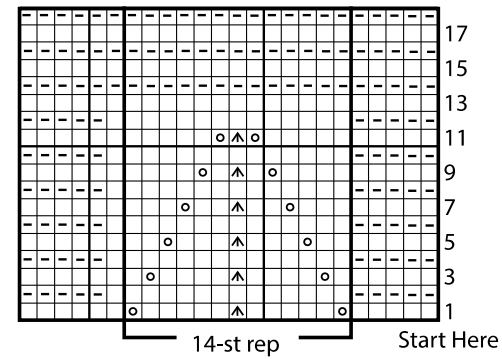
Size U.S. 10½ (6.5 mm) circular knitting needle 36" [91.5 cm] long (10397021) **or size needed to obtain gauge.**

BERNAT® KNIT ZIGZAG BLANKET | KNIT

19th to 36th rows: Rep from ** to ** substituting B for A.

37th to 54th rows: Rep from ** to ** substituting C for A.

Rep last 54 rows for pat until work from beg measures approx 65" [175 cm], ending with 5 garter rows of MC. Cast off knitwise (WS)



Key

- ☐ = Knit on RS rows. Purl on WS rows
- ◻ = Purl on RS rows. Knit on WS rows
- ⊠ = Sl1. K2tog. pss0.
- ⊞ = yo